



ODYSSEY® FAMILY IMAGERS_

SOLUTIONS FOR ADVANCED SCIENTIFIC RESEARCH





FROM CHAOS COMES DISCOVERY

The very things that make the world so intricate — uncertainty, variables, connections — can make uncovering answers so incredibly challenging. Yet scientists know there are answers to be found, and discoveries to be made.

LICORbio's Odyssey family of imagers is your constant in that quest. Your constant for innovation. Your constant for reliability. Your constant for speed and accuracy. When data integrity and clarity of answers matter, the Odyssey family is what scientists turn to. There are more than 40,000 citations in prestigious, peer-reviewed journals to prove it.

You're looking for the next tool to help you bring order out of the chaos. In your pursuit of these new discoveries, turn to LICORbio's Odyssey family.

ODYSSEY® M 4-7

ODYSSEY® F 8-11

ODYSSEY® XF 12-15

SOFTWARE 16-17

REAGENTS 18

YOUR_CONSTANT

ODYSSEY M

ODYSSEY[®]**SEE MORE THAN
EVER BEFORE**

The Odyssey M is more than a biological assay imager. It's a solution with innovative capabilities and performance you can't find anywhere else. It's a doorway to discoveries. It's new research opportunities. It's how you'll empower your entire lab to follow the science wherever it leads.



**UNSURPASSED CAPABILITIES.
UNMATCHED DATA CONFIDENCE.**

For more in-depth information from every sample run, we gave the Odyssey M a sophisticated sCMOS image sensor and industry-leading 5-micron resolution. No other imager can give you this level of sensitivity and dynamic range. With NIR and visible fluorescence, RGB, and optional luminescence channel capabilities — all 19 channels calibrated and integrated for consistent performance — you can run a vast variety of assays. And our innovative line-scanning technology leads the industry in speed. The Odyssey M acquires all of this data in minutes, not hours.



**DOZENS
OF ASSAYS**

Gels, Membranes, Plates,
Slides, and More



**5-MICRON
RESOLUTION**

More In-Depth Information
From Every Sample



**UP TO 19
CHANNELS**

Fluorescent, Colorimetric, and
Luminescent Spectrums



**MINUTES,
NOT HOURS**

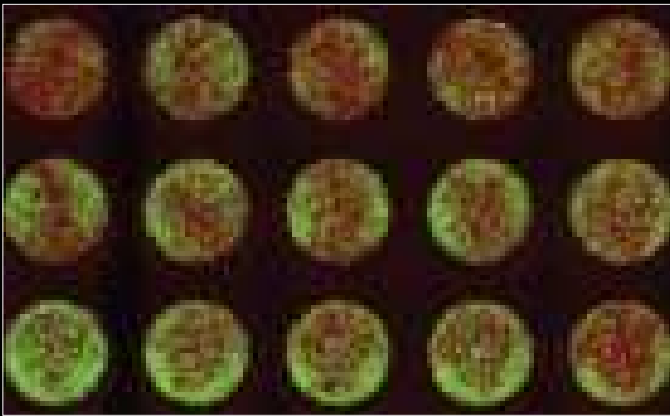
Innovative Line Scanning Is
Faster and More Comprehensive

THE UNMATCHED VERSATILITY OF MULTIPLE INSTRUMENTS IN ONE

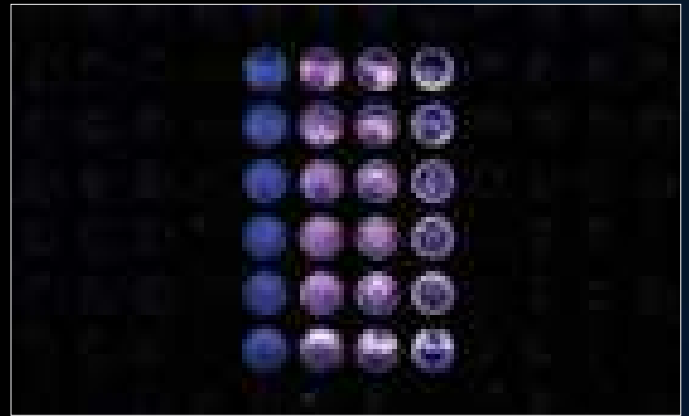
The 19 channels of the Odyssey M can be imaged in dozens of combinations, while its uniform illumination and optimal sensitivity reveal robust data with every scan. Using the Odyssey M's dynamic range of more than 6 logs, you'll capture the full range of data in one acquisition.

Its 5-micron resolution is optimal for fast, detailed tissue section images, yet the smaller file size significantly lowers digital image storage costs.

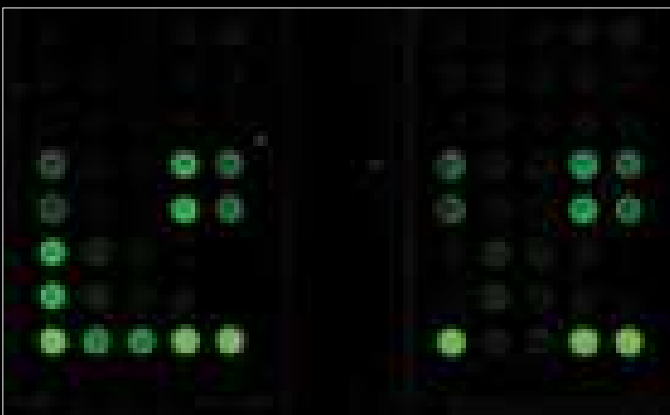
With access to emerging applications — such as whole slide triage imaging — as well as already essential applications, the Odyssey M has the versatility to take your research everywhere discovery leads you.



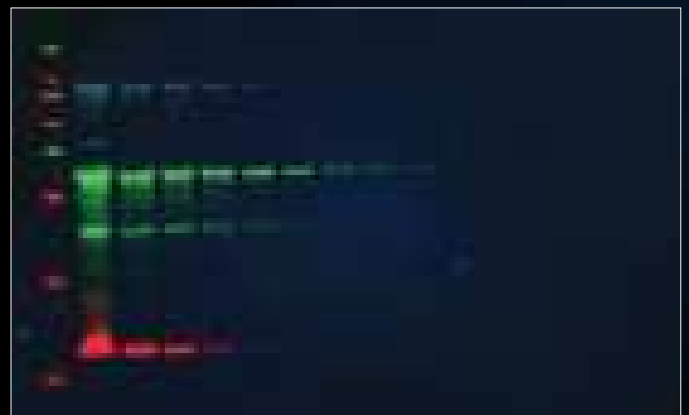
FLUORESCENT PROTEIN ASSAYS



IN-CELL WESTERN™ ASSAY



PROTEIN ARRAYS



FLUORESCENT WESTERN BLOT

SPECIFICATIONS

APPLICATIONS

- Near-Infrared Fluorescent Western Blot
- Visible Fluorescent Western Blot
- Chemiluminescent Western Blot
- Colorimetric Western Blot
- In-Cell Western™ Assay
- On-Cell Western Assay
- Cell Health Assay
- Plate-Based Assays (ELISA/FLISA)
- Fluorescent Tissue Section
- Histological Staining
- Protein Array
- Fluorescent Protein Gel
- Colorimetric Protein Gel
- Nucleic Acid Gel
- EMSA/Gel Shift Assay
- Fluorescent Protein Assay

OPTICAL SYSTEM

Total Image Area	25 cm W × 18 cm D (9.8" W × 7.1" D)
Image Area of Chemi Region	15 cm W × 11 cm D (5.9" W × 4.3" D)
Pixel Resolution	5, 10, 20, 50, or 100 µm
Dynamic Range*	> 6 logs for chemiluminescence (optional) and fluorescence
Detectors	sCMOS image sensor
Sensor for chemiluminescence	CCD (pixel size 6.45 µm)
Laser Lifetime	685 nm and 785 nm: 20,000 hours 488 nm and 520 nm: 40,000 hours Class 1 laser product
Light Sources	RGB LED (trans-illumination) RGB LED (reflective illumination) Solid-state diode laser at 488 nm Solid-state diode laser at 520 nm Solid-state diode laser at 685 nm Solid-state diode laser at 785 nm
Focusing	Microscope is adjustable -1.00 to 5.00 mm above the scan bed to obtain best signal-to-noise ratio

SIZE & WEIGHT

Dimensions (Instrument Only)	61 cm W × 76 cm D × 38 cm H (24" W × 30" D × 15" H) Height with hood fully open: 71 cm (28")
Weight	55 kg (121 lbs) with chemiluminescence module 52 kg (115 lbs) without chemiluminescence module

SOFTWARE



Empiria Studio®
Software



Image Studio™
Software

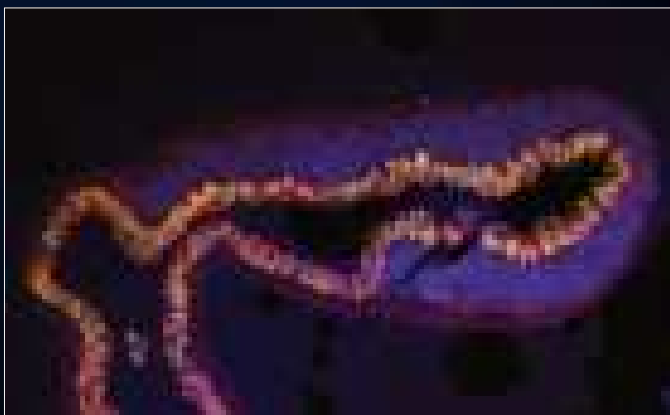


LI-COR® Acquisition
Software

*This dynamic range is obtained in a single acquisition.
Specifications subject to change without notice.



NUCLEIC ACID GELS



TISSUE SECTION IMAGING

ODYSSEY®



A FAST, FLEXIBLE WORKHORSE

You don't have to imagine faster scans, greater opportunities, or impeccable data quality. The Odyssey F delivers. Both the 3- and 10-channel instruments offer greater capability, flexibility, and accuracy. Plus, the Odyssey F completes scans twice as fast as its LICORbio predecessor and significantly faster than competitive laser-based instruments.



> **FASTER
RESULTS**

2x Faster than the
Industry-Leading Point Scanner

> **ENHANCED
FLEXIBILITY**

3- and 10-Channel Models to Customize
Your Approach to Fluorescent Imaging

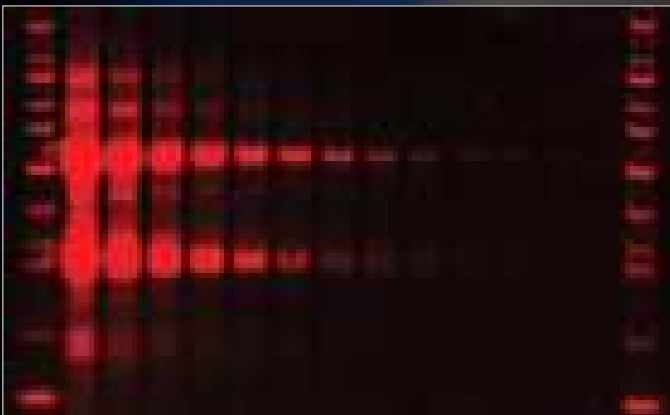
> **PROVEN
RELIABILITY**

Incorporates Decades of Expertise in
Quantitative Biological Assays

DATA AND ADAPTABILITY TO ACCELERATE DISCOVERY

Both Odyssey F models offer you greater sensitivity and unmatched dynamic range at the click of a mouse. Our dual-NIR-laser Odyssey F gives you more throughput and higher performance than other imagers, and the best opportunity for quantitative imaging. With the addition of two visible fluorescence lasers, the next tier of Odyssey F will further enhance your insights. It adds powerful laser-based multiplexing options for plate-based assays, slide imaging, and more to your lab's capabilities.

ODYSSEY F



PROTEIN GEL



FLUORESCENT WESTERN BLOT

EXPAND YOUR LAB'S POTENTIAL

The Odyssey F imagers will enhance your lab's essentials, with greater throughput and additional channels, along with the confidence of accurate, reproducible data. We enhanced the focus offset range to give you broader compatibility with a variety of available plates. With either model of Odyssey F, you'll get more than the best quantitative protein gels and Western blots. You'll have accurate, reliable, In-Cell Western™ Assays, protein arrays, and tissue section imaging capabilities, as well.

Expand your horizons with confidence. Odyssey F imagers are fast, reliable workhorses that will give you the dynamic results and data confidence your research needs.



GFP PLATE



NUCLEIC ACID GEL

SPECIFICATIONS

APPLICATIONS

- EMSA/Gel Shift Assay
- Glycoprotein Staining
- Nucleic Acid Gel Imaging
- Fluorescent Gel Staining
- Near-Infrared Fluorescent Western Blot
- Visible Fluorescent Western Blot*
- In-Cell Western™ Assay
- On-Cell Western Assay
- RNAi Analysis
- Fluorescent Protein Assay
- Tissue Section Imaging
- Protein Array

OPTICAL SYSTEM

Total Image Area	25 cm W × 18 cm D (9.8" W × 7.1" D)
Pixel Resolution	21, 42, 84, 169, or 337 μm Scan preview mode (variable resolution)
Dynamic Range*	> 6 logs
Detection Modes	Fluorescence
Laser Lifetime	685 nm and 785 nm: 40,000 hours 488 nm and 520 nm: 40,000 hours Class 1 laser product
Light Source	Model 9150: 685, 785 Model 9180: 488, 520, 685, and 785
Focusing	Microscope is adjustable -1.00 to 5.00 mm above the scan bed to obtain best signal-to-noise ratio

SIZE & WEIGHT

Dimensions (Instrument Only)	53 cm W × 62 cm D × 37 cm H (21" W × 24.5" D × 15" H) Height with hood fully open: 74 cm (29")
Weight	31.75 kg (70 lbs)

SOFTWARE



Empiria Studio®
Software



Image Studio™
Software



LI-COR® Acquisition
Software

*This dynamic range is obtained in a single acquisition.
Specifications subject to change without notice.

ODYSSEY XF

ODYSSEY[®]

WHERE BREAKTHROUGHS BEGIN

The Odyssey XF is an ideal entry point to the Odyssey family of imagers, putting decades of groundbreaking imaging expertise at your disposal. Move beyond qualitative to quantitative results, and obtain more dynamic and accurate answers.





> **SOPHISTICATED,
YET EASY TO USE**

Data Confidence for Researchers
of All Experience Levels

> **BEYOND THE
QUALITATIVE**

Bring Your Data into Digital
Imaging with Ease

> **ROBUST DATA
COLLECTION**

Capabilities with More Value

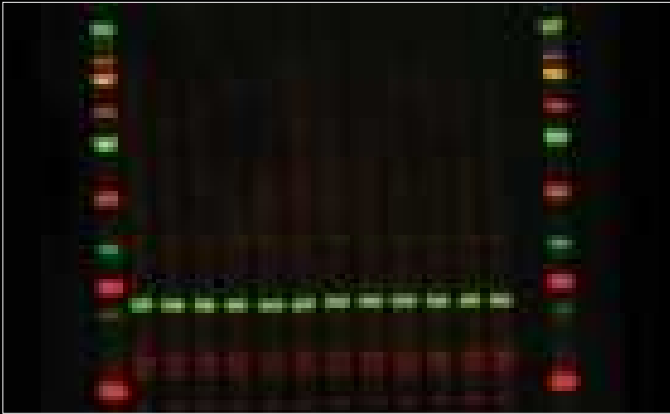
CLEAR IMAGES AND EVEN CLEARER ANSWERS

The unique optics of the Odyssey XF deliver uniform images without saturation and no post-capture manipulation. That means you'll be able to see more than ever while capturing the true detail and complexity of your data. The XF is also optimized for a variety of applications, adding to the Odyssey family's trusted reputation within over 40,000 peer-reviewed publications.

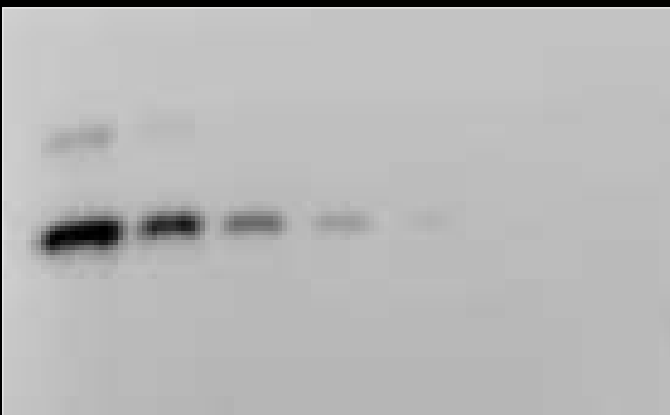
THE STARTING POINT FOR GREATER DISCOVERIES

The Odyssey XF uses two NIR lasers, as well as LED and CCD with innovative FieldBrite™ technology for equal illumination across the entire imaging field. So not only will you get more accurate, consistent scans, you'll see the Odyssey XF offers greater dynamic range and increased sensitivity. You'll get the best possible quantitative Western blots, plus chemiluminescent Western blots, nucleic acid gels, and Coomassie protein array imaging capabilities.

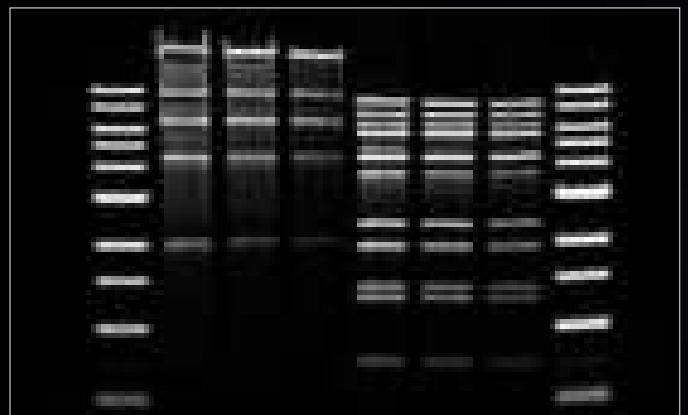
The Odyssey XF Imager lays the groundwork for reliable analysis by taking precise, high-integrity images. Gathering all the vital components of separate NIR and chemiluminescent imagers into one, the Odyssey XF is the ideal solution for researchers of all experience levels.



NEAR-INFRARED FLUORESCENT WESTERN BLOT



CHEMILUMINESCENT WESTERN BLOT



NUCLEIC ACID GEL

SPECIFICATIONS

APPLICATIONS

- Near-Infrared Fluorescent Western Blot
- Chemiluminescent Western Blot
- Fluorescent Protein Gel
- Nucleic Acid Gel

OPTICAL SYSTEM

Total Image Area	12 cm W × 10 cm D (4.7" W × 3.9" D)
Imaging Tray (Internal Dimensions)	14 cm W × 12 cm D (5.5" W × 4.7" D)
Pixel Resolution	125 µm
Dynamic Range*	>6 logs
Detectors	Low-noise CCD, thermoelectrically cooled CCD pixel size: 6.45 µm
Laser Lifetime	20,000 hours of operation Class 1 laser product
Light Sources	600 channel laser source: 525 nm LED 700 channel laser source: Solid-state diode laser at 685 nm 800 channel laser source: Solid-state diode laser at 785 nm
Patented FieldBrite™ XT2 Technology	CV < 3% across field

SIZE & WEIGHT

Dimensions (Instrument Only)	41.4 cm W × 47 cm D × 67.3 cm H (16.3" W × 18.5" D × 25.5" H) Depth with imaging drawer open: 59.7 cm (23.5")
Weight	27 kg (60 lbs)

SOFTWARE



Empiria Studio®
Software



Image Studio™
Software



LI-COR® Acquisition
Software

*This dynamic range is obtained in a single acquisition.
Specifications subject to change without notice.



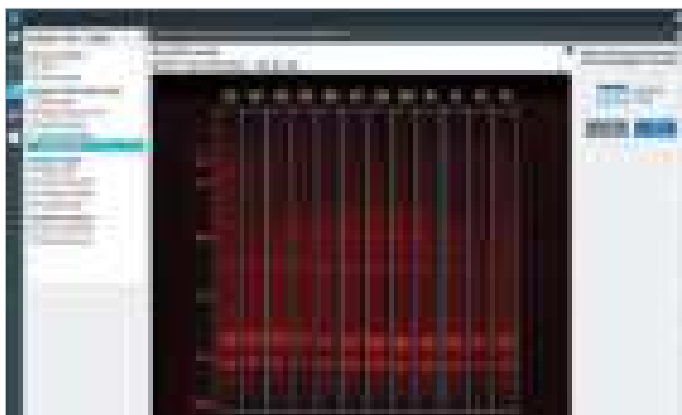
FLUORESCENT PROTEIN GEL



EMPIRIA STUDIO® SOFTWARE

UNMATCHED EASE, UNPRECEDENTED ACCURACY

LICORbio Empiria Studio Software is the ideal analysis tool for labs demanding workflow-based analysis. With automatic calculations, patented tools for lane finding and background subtraction, and a variety of intuitive workflows to meet individual needs, it limits manual work for increased accuracy and consistency across team members. And every aspect of Empiria Studio was developed with best practices to heighten confidence in reproducibility, for reliable, publishable results.



TAKE THE GUESSWORK OUT OF QUANTIFICATION

- Automatically normalizes protein data based on your chosen internal loading control.
- Automatically calculates advanced statistical values, including % CV, standard deviation, and signal-to-noise ratio.
- Automatically calculates fold change and creates a chart using your data.

GET CONSISTENT RESULTS, FASTER

- Adaptive Lane Finding analyzes up to 26 lanes and multiple channels with up to two targets per channel.
- Adaptive Background Subtraction adjusts to the unique background in each image to subtract the background automatically.
- Intuitive workflows allow for consistent analysis across a variety of needs including antibody validation, combined linear range determination, and housekeeping protein validation.

REPLICATE RESULTS WITH THE HIGHEST INTEGRITY

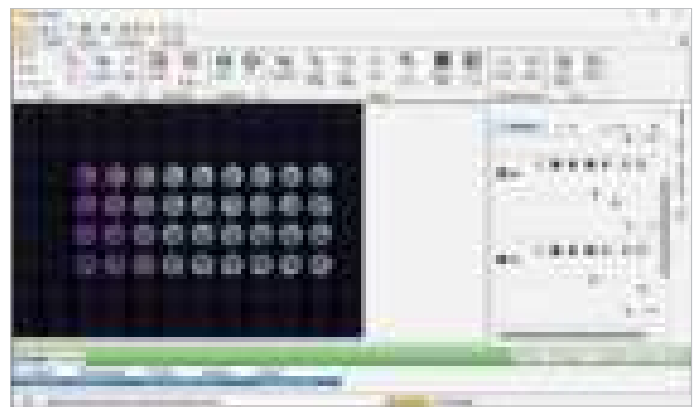
- Developed with integrated grant and publisher best practices to heighten confidence in reproducibility.
- Incorporates NIH guidelines for scientific record keeping.
- Includes Western blot workflows created in partnership with the Journal of Biological Chemistry, Nature Publishing Group, and Rockefeller University Press.



IMAGE STUDIO™ SOFTWARE

FLEXIBILITY WITH CONFIDENCE

LICORbio Image Studio Software is a powerful analysis tool for researchers needing flexibility and essential quantification results for a variety of assays. Optimized to support the complete LICORbio Odyssey family of imagers, the software's free-form design enables analysis with heightened control and full transparency, without any image manipulation. And Image Studio's interface organizes tools for image acquisition, analysis, and display adjustment into ribbons, meaning the feature your research needs is never more than a few clicks away.





BETTER REAGENTS MEAN BETTER RESULTS

There's a clear reason you should be using LICORbio reagents with your LICORbio imager: greater data confidence with every sample you scan. Our products are compatible with a diverse range of imaging applications — including fluorescent and chemiluminescent Western blots, In-Cell Western™ Assays, immunofluorescence, small animal imaging, and much more.

Of course, other reagents will work with LICORbio products, but consider this: our industry-leading instruments are precisely calibrated to use our reagents. By combining them, you get the highest quality results. And if questions arise, or an assay goes wrong, we're ready to provide best-in-class support to help on your journey to discovery.

REAGENT LOYALTY PROGRAM

PURCHASE NOW, SAVE FOR LIFE

When you purchase a LICORbio imager, your loyalty gets rewarded. Instrument owners are eligible to receive discounts on all reagent purchases throughout the life of their imager. Signing up for the program is easy, and the rewards are well worth it. Learn more and get rewarded today at licor.com/loyalty.

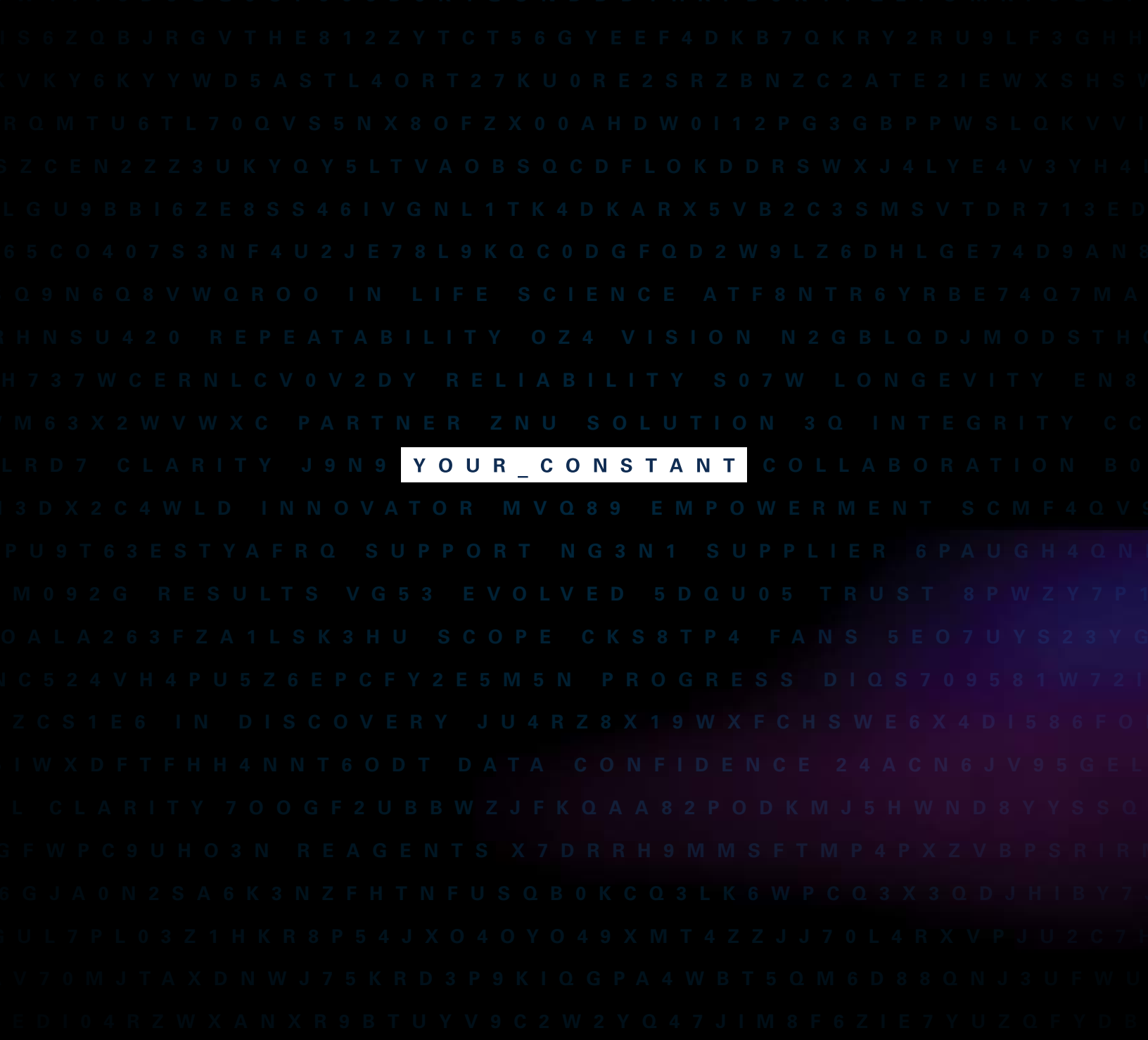


GET REWARDED NOW

APPLICATIONS BY ODYSSEY® IMAGER

	ODYSSEY M	ODYSSEY F	ODYSSEY XF
EMSA/Gel Shift Assay	X	X	
Fluorescent Protein Gel	X	X	X
Colorimetric Protein Gel	X		
Nucleic Acid Gel	X	X	X
Near-Infrared Fluorescent Western Blot	X	X	X
Visible Fluorescent Western Blot	X	X**	
Chemiluminescent Western Blot	X*		X
Colorimetric Western Blot	X		
Fluorescent Protein Assays	X	X	
In-Cell Western™ Assay	X	X	
On-Cell Western Assay	X	X	
Cell Health Assay	X		
ELISA/FLISA	X		
Fluorescent Tissues	X	X	
Histological Staining	X		
Protein Array	X	X	

* With Chemi Models
** With 10-Channel Model



YOUR_CONSTANT

LICORbio

4647 Superior Street
Lincoln, NE 68504
Phone: +1-402-467-0700
Toll free: 800-645-4267
biosales@licor.com

LICORbio Distributor Network

www.licor.com/bio/distributors

LI-COR Biosciences GmbH

Siemensstraße 25A
61352 Bad Homburg
Germany
Phone: +49 (0) 6172 17 17 771
bio-eu@licor.com

LI-COR Biosciences UK Ltd.

St. John's Innovation Centre
Cowley Road
Cambridge
CB4 0WS
United Kingdom
Phone: +44 (0) 1223 422104
bio-eu@licor.com