

thermo scientific



# Thermo Scientific Hotplates and Stirrers

Benchtop equipment for every lab, every day

**ThermoFisher**  
SCIENTIFIC

# Exceptional performance

A robust portfolio of Thermo Scientific™ Hotplates, Stirrers, Stirring Hotplates and supporting accessories provide an impressive combination of superior performance, advanced safety and operational simplicity that will complete any laboratory need.

## General Lab

Basic analog and standard digital models are designed with temperature stability and durability in a variety of sizes and top plate materials to meet most laboratory applications of stirring and heating samples, while the advanced models are equipped with programming functions for repeatable and demanding applications.



## Specialty

Special models deliver a host of capabilities that bring reliability, safety and precision to various applications, including small or large volume stirring, multipoint stirring, explosion proof heating, stirring in water baths or CO<sub>2</sub> incubators and low speed stirring for cell culture.



The following are trademarks of Thermo Fisher Scientific and its subsidiaries: Cimarec, and Super-Nuova.

# Contents

## **General Lab Hotplates, Stirrers and Hotplate Stirrers**

Cimarec+ Hotplate, Stirrer, Hotplate Stirrer	4
Super-Nuova+ Hotplate, Stirrer, Hotplate Stirrer	6
Resources for Cimarec+ and Super-Nuova Series	7
Cimarec Basic Hotplate, Stirrer, Stirring Hotplates	8
Student Hotplate	9
Aluminum-Top Hotplate	9
Super-Nuova Multi-Position Digital Stirrers and Stirring Hotplates	10
RT Basic Series Magnetic Stirrers	11
RT Touch Series Magnetic Stirrers	12
RT2 Digital Hotplate	13
RT2 Basic Hotplate Stirrer	14
RT2 Advanced Hotplate Stirrer	15

---

## **Specialty Hotplates, Stirrers and Hotplate Stirrers**

Cimarec i Magnetic Stirrers Overview	16
Cimarec i Micro Stirrer	17
Cimarec i Maxi Direct Stirrers	18
Cimarec i Poly 15 & Multipoint Stirrers	19
Cimarec i Telesystem Multipoint Stirrers	20
Cimarec i Controllers - Telemodul Standard, 40C and 20C	21
Cimarec i Stirrer Accessories	22
Cimarec Power Direct High Capacity Stirrer	23
Cimarec Mobil Direct, Mobil 200 and Mobil 600 Large Volume Stirrers	24
Cimarec i Biosystem Slow Speed Stirrer for Cell Culture	25
Cimarec Komet Stir Bar	26
Cimarec i Controller Summary	27
Large External-Controlled Hotplates	28
2200 Series Aluminum Top Hotplates	29
Explosion-Proof Series Hotplates	30

---

# Cimarec+ Series

Designed with precise stirring control, exceptional safety and temperature performance, Cimarec™+ Hotplate, Stirrer and Hotplate Stirrer units are available in three sizes, providing flexibility from microscale chemistries to production operations

## Features include:

- Provides slow-speed stirring, consistent speed control, and strong magnetic coupling
- Temperature adjustable in 1 degree increments
- HOT TOP warning system designed to protect from accidental burns with prominent display when heating surface is above 50°C (122°F)
- Automatic over-temperature protection
- Top plate choices in ceramic or aluminum
- Easy-to-read LED display (Except SP88854100, SP88854105 stirring function)
- Raised display design protects electronics from spills
- Three sizes for different sample volumes



Cimarec+ Digital Stirring Hotplate

**Includes:** Stir bar (\*only for stirrers and stirring hotplate models)

**Optional:** Temperature probe and splash guard protection shield

**Warranty:** Three years

**Certifications:** cCSAus (100-120V models), CE (230V models), RoHS Compliant



Cimarec+ Digital Stirring Hotplate Family

## Cimarec+ Hotplates, Stirrers and Hotplate Stirrers Specifications

Description	Surface Type	Voltz/Hz	Stir Range (RPM)	Max. Flask Size	Max. Surface Temp °C	Plug Configuration	Cat. No.
<b>Heating Surface: 4.25" x 4.25" (10.8 x 10.8 cm) Overall Dimensions: 5" W x 10" D x 3.9" H (13 x 25.9 x 9.8cm)</b>							
Hotplate	Ceramic	100-120V 50/60Hz	N/A	1L	540	US/JP Plug	HP88854100
Hotplate	Ceramic	230V 50/60Hz	N/A	1L	540	EU, UK, CHN/AUS Plug	HP88854105
Stirrer	Ceramic	100-120V 50/60Hz	50-1500	1L	N/A	US/JP Plug	S88854100
Stirrer	Ceramic	230V 50/60Hz	50-1500	1L	N/A	EU, UK, CHN/AUS Plug	S88854105
Hotplate Stirrer	Ceramic	100-120V 50/60Hz	50-1500	1L	540	US/JP Plug	SP88854100
Hotplate Stirrer	Ceramic	230V 50/60Hz	50-1500	1L	540	EU, UK, CHN/AUS Plug	SP88854105
<b>Heating Surface: 7.25" x 7.25" (18.4 x 18.4 cm) Overall Dimensions: 8.2" W x 14" D x 4" H (20.8 x 36 x 10.5cm)</b>							
Hotplate	Ceramic	100-120V 50/60Hz	N/A	4L	540	US/JP Plug	HP88857100
Hotplate	Ceramic	230V 50/60Hz	N/A	4L	540	EU, UK, CHN/AUS Plug	HP88857105
Stirrer	Ceramic	100-120V 50/60Hz	50-1500	4L	N/A	US/JP Plug	S88857100
Stirrer	Ceramic	230V 50/60Hz	50-1500	4L	N/A	EU, UK, CHN/AUS Plug	S88857105
Hotplate Stirrer	Ceramic	100-120V 50/60Hz	50-1500	4L	540	US/JP Plug	SP88857100
Hotplate Stirrer	Ceramic	230V 50/60Hz	50-1500	4L	540	EU Plug	SP88857105
Hotplate Stirrer	Ceramic	230V 50/60Hz	50-1500	4L	540	CHN/AUS Plug	SP88857106
Hotplate Stirrer	Ceramic	230V 50/60Hz	50-1500	4L	540	UK Plug	SP88857107
Hotplate	Aluminum	100-120V 50/60Hz	N/A	4L	300	US/JP Plug	HP88857104
Hotplate	Aluminum	230V 50/60Hz	N/A	4L	300	EU, UK, CHN/AUS Plug	HP88857108
Stirrer	Aluminum	100-120V 50/60Hz	50-1500	4L	N/A	US/JP Plug	S88857104
Stirrer	Aluminum	230V 50/60Hz	50-1500	4L	N/A	EU, UK, CHN/AUS Plug	S88857108
Hotplate Stirrer	Aluminum	100-120V 50/60Hz	50-1500	4L	300	US/JP Plug	SP88857104
Hotplate Stirrer	Aluminum	230V 50/60Hz	50-1500	4L	300	EU, UK, CHN/AUS Plug	SP88857108
<b>Heating Surface: 10.25" x 10.25" (26.7 x 26.7 cm) Overall Dimensions: 11.3" W x 17.2" D x 4" H (28.8 x 43.8 x 10.5cm)</b>							
Hotplate	Ceramic	100-120V 50/60Hz	N/A	6L	400	US/JP Plug	HP88850100
Hotplate	Ceramic	230V 50/60Hz	N/A	6L	400	EU, UK, CHN/AUS Plug	HP88850105
Stirrer	Ceramic	100-120V 50/60Hz	50-1500	6L	N/A	US/JP Plug	S88850100
Stirrer	Ceramic	230V 50/60Hz	50-1500	6L	N/A	EU, UK, CHN/AUS Plug	S88850105
Hotplate Stirrer	Ceramic	100-120V 50/60Hz	50-1500	6L	400	US/JP Plug	SP88850100
Hotplate Stirrer	Ceramic	230V 50/60Hz	50-1500	6L	400	EU Plug	SP88850105
Hotplate Stirrer	Ceramic	230V 50/60Hz	50-1500	6L	400	CHN/AUS Plug	SP88850106
Hotplate Stirrer	Ceramic	230V 50/60Hz	50-1500	6L	400	UK Plug	SP88850107

Note: 4"x 4" Hotplate Stirrer has digital temperature and analog stirring control.

# Super-Nuova+ Series

Designed to provide reliable performance, dependable safety and simple operation, Super-Nuova™ + Hotplate, Stirrer and Hotplate Stirrer units are available in two sizes with optimized controls

## Features include:

- Top plate choices in ceramic or aluminum
- Easy-to-read LED display for heating, stirring and time setting
- Raised display design protects electronics from spills
- Preset three steps to save temperature, speed and timer settings
- Provides slow-speed stirring, consistent speed control, and stronger magnetic coupling
- HOT TOP warning system designed to protect from accidental burns with prominent display when heating surface is above 50°C of set temperature (122°F)
- Temperature display resolution when connected with probe: <100°C: 0.1 degree; >100°C: 1 degree



**Super-Nuova+ Stirring Hotplate**

**Includes:** PT100 Temperature probe, supporting rod and clamp kit (only for hotplates and stirring hotplates); Stir bar (only for stirrers and stirring hotplate)

**Optional:** PT1000 Temperature probe and splash guard protection shield

**Warranty:** Three years

**Certifications:** cCSAus (100-120V models), CE (230V models), RoHS Compliant

## Super-Nuova+ Hotplates, Stirrers and Stirring Hotplates Specifications

Description	Surface Type	Voltz/Hz	Stir Range (RPM)	Max. Flask Size	Max. Surface Temp °C	Plug Configuration	Cat. No.
<b>Heating Surface: 7.25" x 7.25" (18.4 x 18.4 cm) Overall Dimensions: 8.2" W x 14.2" D x 4.1" H (20.8 x 36 x 10.5cm)</b>							
Hotplate	Ceramic	100-120V 50/60Hz	N/A	4L	450	US/JP Plug	HP88857190
Hotplate	Ceramic	230V 50/60Hz	N/A	4L	450	EU, UK, CHN/AUS Plug	HP88857195
Stirrer	Ceramic	100-120V 50/60Hz	50-1500	4L	N/A	US/JP Plug	S88857190
Stirrer	Ceramic	230V 50/60Hz	50-1500	4L	N/A	EU, UK, CHN/AUS Plug	S88857195
Hotplate Stirrer	Ceramic	100-120V 50/60Hz	50-1500	4L	450	US/JP Plug	SP88857190
Hotplate Stirrer	Ceramic	230V 50/60Hz	50-1500	4L	450	EU, UK, CHN/AUS Plug	SP88857195
Hotplate	Aluminum	100-120V 50/60Hz	N/A	4L	300	US/JP Plug	HP88857194
Hotplate	Aluminum	230V 50/60Hz	N/A	4L	300	EU, UK, CHN/AUS Plug	HP88857198
Hotplate Stirrer	Aluminum	100-120V 50/60Hz	50-1500	4L	300	US/JP Plug	SP88857194
Hotplate Stirrer	Aluminum	230V 50/60Hz	50-1500	4L	300	EU, UK, CHN/AUS Plug	SP88857198
<b>Heating Surface: 10.25" x 10.25" (26.7 x 26.7 cm) Overall Dimensions: 11.3" W x 17.2" D x 4" H (28.8 x 43.8 x 10.5cm)</b>							
Hotplate	Ceramic	100-120V 50/60Hz	N/A	6L	400	US/JP Plug	HP88850190
Hotplate	Ceramic	230V 50/60Hz	N/A	6L	400	EU, UK, CHN/AUS Plug	HP88850195
Stirrer	Ceramic	100-120V 50/60Hz	50-1500	6L	N/A	US/JP Plug	S88850190
Stirrer	Ceramic	230V 50/60Hz	50-1500	6L	N/A	EU, UK, CHN/AUS Plug	S88850195
Hotplate Stirrer	Ceramic	100-120V 50/60Hz	50-1500	6L	400	US/JP Plug	SP88850190
Hotplate Stirrer	Ceramic	230V 50/60Hz	50-1500	6L	400	EU, UK, CHN/AUS Plug	SP88850195



# Resources for Cimarec+ and Super-Nuova+ Series

## Cimarec+ and Super-Nuova+ Series Features and Benefits

Description	Cimarec+ Series	Super-Nuova+ Series
<b>Performance</b>		
Digital RPM display	* (Except 4x4 HPS)	*
RPM range	50-1500rpm	50-1500rpm
Max stirring capacity	1L, 4L, 6L	4L, 6L
Max surface temperature, Ceramic top	4" x 4" 540°C 7" x 7" 540°C 10" x 10" 400°C	7" x 7" 450°C 10" x 10" 400°C
Max surface temperature, Aluminum top	7" x 7" 400°C	7" x 7" 300°C
Temperature display with 0.1°C resolution	*	*
Temperature calibration		*
Time setting		*
Pre-set 3 steps		*
Microprocessor control	*	*
<b>Safety</b>		
HOT TOP Warning	*	*
Over-temperature protection	*	*(User adjustable)
Optional Splash guard	*	*
Digital Temperature display	*	*
<b>Flexibility</b>		
Top plate material	Ceramic, Aluminum	Ceramic, Aluminum
Top plate size	4" x 4", 7" x 7", 10" x 10"	7" x 7", 10" x 10"
Temperature probe	Optional (PT100, PT1000)	* PT100 is include, Optional (PT1000)
Support rods and clamps	Optional	Included
View actual and set temperature simultaneously		*

## Accessories for Cimarec+ and Super-Nuova+ Hotplates, Stirrers and Hotplate Stirrers

Description	Cat. No.
Splash guard/safety shield for all Cimarec+ and Super-Nuova+ 4" x 4" Sitrers, Hotplates and Hotplate Stirrers	CIC0001444
Splash guard protection shield for all Cimarec+ and Super-Nuova+ 7" x 7" Sitrers, Hotplates and Hotplate Stirrers	CIC0001445
Splash guard/safety shield for all Cimarec+ and Super-Nuova+ 10" x 10" Sitrers, Hotplates and Hotplate Stirrers	CIC0001446
PT100 temperature probe, 0-400°C, Stainless steel for Cimarec+ ( $\pm 1.8^\circ\text{C}$ @ $70^\circ\text{C}$ ) and Super-Nuova+ ( $\pm 1.2^\circ\text{C}$ @ $70^\circ\text{C}$ ) Hotplates	CIC0001447
PT1000 temperature probe, 0-400°C, Stainless steel for Cimarec+ ( $\pm 1.0^\circ\text{C}$ @ $70^\circ\text{C}$ ) and Super-Nuova+ ( $\pm 0.5^\circ\text{C}$ @ $70^\circ\text{C}$ ) Hotplates	CIC0001448
Hastelloy PT1000 temperature probe, 0-400°C, for Cimarec+ and Super-Nuova+ Hotplates, HAsstelloy is chemical and corrosion resistant	CIC0001449
Supporting rod to be used with clamp and clamp holder to hold temperature probe and flask, suitable for all Cimarec+ and Super-Nuova+ models	CIC0001830
Clamp and holder	CIC0001831

\*When the probe is connected, the adjustable temperature range is 30-250°C.



Transparent shields



PT100 PT1000 External Probe



Supporting Rod and Clamps

# Cimarec Basic Hotplate, Stirrer, Stirring Hotplates

Sleek, rugged, no frills design combined with renowned quality, Cimarec Basic Hotplate, Stirrer and Stirring Hotplate units are ideal for economical and general purpose use

## Features include:

- Sleek, rugged design and construction promotes durability
- Innovative top plate design reduces chance of breakage
- Spill-away design protects internal components from damage caused by potential spills
- Solid ceramic top plate cleans easily and resists acids and alkalis
- Integral ring-stand holder accommodates 0.5 in. (1.3cm) diameter support rod

**Includes:** TFE-coated stir bar (only for stirrer and stirring hotplate models)

**Warranty:** Three years

**Certifications:** cCSAus



Cimarec Basic Hotplate and Stirring Hotplates

## Cimarec Basic Hotplates Specifications

Surface Area	Top Plate Material	Temperature Range	Overall L x W x H	Electrical	Cat. No.
10.8 × 10.8cm (4.25 × 4.25in.)	Ceramic	150° to 538°C (302° to 1000°F)	20 × 14.5 × 12.7cm (7.9 × 5.7 × 5in.)	120V 60Hz, 3.21A, 385w	HP194515
18.4 × 18.4cm (7.25 × 7.25in.)	Ceramic	150° to 538°C (302° to 1000°F)	28.2 × 21.1 × 12.7cm (11.1 × 8.3 × 5in.)	120V 60Hz, 8.96A, 1062w	HP194825

## Cimarec Basic Hotplate Stirrers Specifications

Surface Area	Top Plate Material	Stirring Range	Temperature Range	Overall L x W x H	Electrical	Cat. No.
10.8 × 10.8cm (4.25 × 4.25in.)	Ceramic	250 to 2500rpm	150° to 538°C (302° to 1000°F)	20 × 14.5 × 12.7cm (7.9 × 5.7 × 5in.)	120V 60Hz, 3.45A, 405w	SP194715
18.4 × 18.4cm (7.25 × 7.25in.)	Ceramic	250 to 2500rpm	150° to 538°C (302° to 1000°F)	28.2 × 21.1 × 12.7cm (11.1 × 8.3 × 5in.)	120V 60Hz, 9.18A, 1086w	SP195025

## Cimarec Basic Stirrers Specifications

Surface Area	Top Plate Material	Stirring Range	Overall L x W x H	Electrical	Cat. No.
10.8 × 10.8cm (4.25 × 4.25in.)	Ceramic	250 to 2500rpm	20 × 14.5 × 12.7cm (7.9 × 5.7 × 5in.)	120V 60Hz, 0.45A, 21w	S194615
18.4 × 18.4cm (7.25 × 7.25in.)	Ceramic	250 to 2500rpm	28.2 × 21.1 × 12.7cm (11.1 × 8.3 × 5in.)	120V 60 Hz, 0.48A, 23w	S194925



# Student Hotplates

Small diameter heating surfaces, which provide high heat in a small footprint, ideal for quick sample testing

## Features include:

- Perforated stainless-steel case allows air to circulate protecting controls and countertop from excess heat
- Thermostatic temperature control provides excellent stability of the top plate temperature and sample
- Reaches 260°C (500°F) in just 4.5 minutes
- Recommended for use with glass vessels



Student Hotplate

**Warranty:** Three years

## Student Hotplates Specifications

Surface Material	Maximum Temperature	Electrical	Cat. No.
Aluminum	371°C (700°F)	120V 50/60Hz, 325w, 2.7A	HP2305BQ
Aluminum	371°C (700°F)	240V 50/60Hz, 325w, 1.4A (Special USA Plug)	HP2310BQ

# Aluminum-Top Hotplates

Cast-aluminum top for maximum heat transfer, strength and corrosion resistance

## Features include:

- Equipped with thermostatic temperature control
- Baffle-vented welded stainless-steel case
- Recommended for use with glass vessels only



Aluminum-Top Hotplate

**Warranty:** Three years

**Certifications:** UL listed (120V model)

## Aluminum-Top Hotplates Specifications

Heating Surface Area	Temperature Range	Temperature Uniformity	Overall L x W x H	Volts	Cat. No.
15.9cm <sup>2</sup> (6.25 sq.in.)	38° to 371°C (100° to 700°F)	±2.4°C at 100°C	19.4 x 16.8 x 11.1cm (7.63 x 6.63 x 4.38in.)	120V	HPA1915BQ
15.9cm <sup>2</sup> (6.25 sq.in.)	38° to 371°C (100° to 700°F)	±2.4°C at 100°C	19.4 x 16.8 x 11.1cm (7.63 x 6.63 x 4.38in.)	240V (Special USA Plug)	HPA1910MQ

# Super-Nuova Multi-Position Digital Stirrers and Stirring Hotplates

Ideal for high-volume, high-performance processing, life science and biotechnology applications and laboratories with multiple users

## Operating features

- Four independently controlled stirring positions to provide smooth, slow speed stirring and rapid breaking
- Separate easy to read displays for heating and stirring are adjustable in 1°C and 1rpm increments
- Programmable preset buttons can store four commonly used protocols
- Control either top plate surface or liquid temperature (when using the included PTFE-coated probe)
- Calibration mode allows remote probe to be calibrated to external standards at a user selected temperature
- Integrated ring stand, single knob design and RS232 output
- Walk away timer shuts off heating, stirring or both after preset user defined interval
- User-adjustable over-temperature protection prevents overheating, short-circuiting and internal damage in case of sample overflow
- Red HOT TOP warning light activates when heating surface is above 50°C (122°F) and notifies user when temperature falls to 50°C or below
- Lock feature prevents accidental changes

## Safety features

- Cast-aluminum base helps prevent tipping and spillage from internal electronics

**Includes:** Detachable line cord and plug, 6in. Type K probe. Stirring models also include stir bar

**Warranty:** Three years

**Certifications:** cCSAus (all models), CE (220-240V models)



Super-Nuova Multi-Position Digital Stirrer

## Super-Nuova Multi-Position Digital Stirring Hotplates Specifications

No. of Places	Stirring Range	Temperature Range	Overall L x W x H	Shipping Weight	Electrical	Cat. No.
4	50 to 1200rpm	RT +1° to 370° C (33.8° to 698°F)	41.1 × 28.7 × 10.2cm (16.2 × 11.3 × 4in.)	9.3kg (20.5 lb.)	120V 60Hz, 1400w, 11.8A	SP135935Q
4	50 to 1200rpm	RT +1° to 370° C (33.8° to 698°F)	41.1 × 28.7 × 10.2cm (16.2 × 11.3 × 4in.)	9.3kg (20.5 lb.)	120V 60Hz, 1400w, 11.8A (EU, UK, CHN Plug)	SP135930-33Q

## Super-Nuova Multi-Position Digital Stirrers Specifications

No. of Stirring Positions	Stirring Range	Overall L x W x H	Shipping Weight	Electrical	Cat. No.
4	50 to 1200rpm	41.1 × 28.7 × 10.2cm (16.2 × 11.3 × 4in.)	9.3kg (20.5 lb.)	120V 60Hz	S136035Q
4	50 to 1200rpm	41.1 × 28.7 × 10.2cm (16.2 × 11.3 × 4in.)	9.3kg (20.5 lb.)	220-240V 50/60Hz (EU, UK, CHN Plug)	S136030-33Q

# RT Basic Series Magnetic Stirrers

Experience the reliability of Thermo Scientific™ RT Basic Magnetic Stirrers ideal for routine stirring applications

## Features include:

- Strong magnetic coupling to ensure consistent stirring during experimental procedures
- Three size options
- Low profile lightweight design with small footprint
- Speed Control: 150 to 2500rpm

**Includes:** Two non-slip silicone plate covers (1 black, 1 white)

**Warranty:** Two years

**Certifications:** cCSAus (100-120V models), CE (230V models), RoHS Compliant



RT Basic Series Magnetic Stirrers

## RT Basic Series Magnetic Stirrers Specifications

Stirring Capacity	Speed Range	Maximum Load (vessel)	Mechanism	Body Material	Volts/Hz	Power Consumption	Plug Configuration	Cat. No.
Heating Surface: 120 mm (4.72 in.) diameter Overall Dimensions: 130 x 120 x 65mm (5.12 x 5.12 x 2.56in.)								
2L	150 to 2500 rpm	15 kg (33.07 lbs)	Brushless DC motor	Polypropylene	100-240V, 50/60Hz	5W	US Plug	88880007
2L	150 to 2500 rpm	15 kg (33.07 lbs)	Brushless DC motor	Polypropylene	100-240V, 50/60Hz	5W	EU, UK, CHN/AUS Plug	88880008
4L	150 to 2500 rpm	22 kg (44.09 lbs)	Brushless DC motor	Polypropylene	100-240V, 50/60Hz	6W	US Plug	88880009
4L	150 to 2500 rpm	22 kg (44.09 lbs)	Brushless DC motor	Polypropylene	100-240V, 50/60Hz	6W	EU, UK, CHN/AUS Plug	88880010
5L	150 to 2500 rpm	25 kg (55.12 lbs)	Brushless DC motor	Polypropylene	100-240V, 50/60Hz	6W	US Plug	88880011
5L	150 to 2500 rpm	25 kg (55.12 lbs)	Brushless DC motor	Polypropylene	100-240V, 50/60Hz	6W	EU, UK, CHN/AUS Plug	88880012

## Accessories for RT Basic Series Magnetic Stirrers

Description	Cat. No.
Non-slip silicone plate cover for items 88880007 and 88880008 (White color, Silicone Ø120cm)	88880144
Non-slip silicone plate cover for items 88880009 and 88880010 (White color, Silicone Ø170cm)	88880145
Non-slip silicone plate cover for items 88880011 and 88880012 (White color, Silicone Ø220cm)	88880146



Non-slip silicone plate covers

# RT Touch Series Magnetic Stirrers

Stay in control with a low profile digital display stirrer, ideal for routine stirring applications where precise stir speed is required

## Features include:

- Digital control and programmable settings
- Gradual start-up stirring to prevent splashing
- Threaded hole for support rod
- Low profile lightweight design with small footprint; two sizes available
- Strong magnetic coupling to ensure consistent stirring during experimental procedures
- Speed Control: 30 to 2000rpm
- Timer options: Run continuously or countdown
- Detachable Plug



RT Touch Series Magnetic Stirrer

**Includes:** Stir bar and two non-slip silicone plate covers (1 black, 1 white)

**Warranty:** Two years

**Certifications:** cCSAus (100-120V models), CE (230V models), RoHS Compliant



Non-slip silicone plate covers

## RT Touch Series Magnetic Stirrers Specifications

Stirring Capacity	Speed Range	Maximum Load (vessel)	Speed Control	Body Material	Volts/Hz	Power Consumption	Plug Configuration	Cat. No.
<b>Heating Surface: 170 mm (6.69 in.) diameter. Overall Dimensions: 210 x 280 x 72mm (8.27 x 11.02 x 2.82in)</b>								
4L	30 to 2000rpm	20kg / 44.09lbs	Digital	Polypropylene	100-240V, 50/60Hz	6W	US Plug	88880013
4L	30 to 2000rpm	20kg / 44.09lbs	Digital	Polypropylene	100-240V, 50/60Hz	6W	EU, UK, CHN/AUS Plug	88880014
<b>Heating Surface: 220 mm (8.66 in.) diameter. Overall Dimensions: 260 x 360 x 72mm (10.24 x 14.17 x 2.82in)</b>								
5L	30 to 2000rpm	25kg / 55.12lbs	Digital	Polypropylene	100-240V, 50/60Hz	6W	US Plug	88880015
5L	30 to 2000rpm	25kg / 55.12lbs	Digital	Polypropylene	100-240V, 50/60Hz	6W	EU, UK, CHN/AUS Plug	88880016

## Accessories for RT Touch Series Magnetic Stirrers Specifications

Description	Cat. No.
Non-slip silicone plate cover for items 88880013 and 88880014 (White color, Silicone Ø170cm)	88880145
Non-slip silicone plate cover for items 88880015 and 88880016 (White color, Silicone Ø220cm)	88880146

# RT2 Digital Hotplate

Equipped with hot top warning and built-in temperature shut-off to provide accurate heating of samples and safety to the laboratory

## Features include:

- Precise digital control with 0.1C resolution
- Automatic over-temperature safety shut off at 450°C
- HOT TOP warning indicator
- Microprocessor PID temperature control to view and set temperature simultaneously
- Two threaded holes for support rods
- Keypad lock
- Heating rate can be set from 0 to 100% at 1% interval
- Timer can be set to start immediately, count down or start when top plate reaches desired set point
- Aluminum top provides temperature uniformity while the thin ceramic coating provides corrosion resistance



RT2 Digital Hotplate

**Optional:** Non-slip heating bath, transparent safety shield

**Warranty:** Two years

**Certifications:** cCSAus (100-120V models), CE (230V models), RoHS Compliant

## RT2 Digital Hotplate Specifications

Temperature Range	Heating Control	Maximum Load (vessel)	Display	Body Material	Top Plate Material	Volts/Hz	Power Consumption	Plug Configurations	Cat. No.
Heating Surface: 140 mm (5.5 in.) diameter Overall Dimensions: 161 x 290 x 100mm (6.34 x 11.42 x 3.94in.)									
Max 350°C /662°F	Feedback Control with PID	25kg / 55.1lbs	LED digital (0.1C resolution)	Cast aluminum	Ceramic coated aluminum	120V, 60Hz	600W	US Plug	88880002
Max 350°C /662°F	Feedback Control with PID	25kg / 55.1lbs	LED digital (0.1C resolution)	Cast aluminum	Ceramic coated aluminum	230V, 50/60Hz	600W	EU, UK, CHN/ AUS Plug	88880001

## Accessories for RT2 Digital Hotplate Stirrer

Description	Cat. No.
Heating Bath (Ø180mm, height 85mm) (stainless steel 304)	88880141
Transparent Shield (PC)	88880142
Support Rod (Ø12mm, 400mm, M10) (stainless steel 304)	88880143



RT2 Digital Hotplate with transparent shield

# RT2 Basic Hotplate Stirrer

Rely on the accuracy of a low-profile analog hotplate stirrer for most routine applications. Each unit is equipped with hot top warning and built-in over-temperature safety shut-off

## Features include:

- Automatic over-temperature safety shut off at 450°C
- HOT TOP warning indicator
- Max temperature of 350°C
- 20L stirring capacity
- Two threaded holes for support rods
- Aluminum top provides temperature uniformity while the thin ceramic coating provides corrosion resistance



RT2 Basic Hotplate Stirrer

**Optional:** Non-slip heating bath, transparent shield and supporting rod

**Warranty:** Two years

**Certifications:** cCSAus (100-120V models), CE (230V models), RoHS Compliant

## RT2 Basic Hotplate Stirrer Specifications

Temperature Range	Heating Control	Maximum Load (vessel)	Stirring Capacity (H2O)	Body Material	Top Plate Material	Volts/Hz	Power Consumption	Plug Configurations	Cat. No.
Heating Surface: 140 mm (5.5 in.) diameter. Overall Dimensions: 161 x 290 x 100mm (6.34 x 11.42 x 3.94in.)									
Max 350°C /662°F	Scale	25kg / 55.1lbs	20L	Cast aluminum	Ceramic coated aluminum	120V, 60Hz	600W	US Plug	88880004
Max 350°C /662°F	Scale	25kg / 55.1lbs	20L	Cast aluminum	Ceramic coated aluminum	230V, 50/60Hz	600W	EU, UK, CHN/ AUS Plug	88880003

## Accessories for RT2 Basic Hotplate Stirrer

Description	Cat. No.
Heating Bath (Ø180mm, height 85mm) (stainless steel 304)	88880141
Transparent Shield (PC)	88880142
Support Rod (Ø12mm, 400mm, M10) (stainless steel 304)	88880143



Heating Bath for RT2 Digital Hotplate



# RT2 Advanced Hotplate Stirrer

Experience precision with the RT2 Advanced Hotplate Stirrer, equipped with a temperature probe for measurements during critical experiments

## Features include:

- Precise digital control with 0.1C resolution
- 20L stirring capacity and stir speed range is 30 to 2000RPM
- Feedback function allows unit to maintain set speed, if stirring viscosity changes
- HOT TOP warning indicator and automatic over-temperature safety shut off at 450°C
- Heating rate can be set from 0 to 100% at 1% interval
- Keypad lock and ability to view current and set temperature simultaneously
- Timer options: start immediately or when desired temperature is reached
- Aluminum top provides temperature uniformity while the thin ceramic coating provides corrosion resistance



RT2 Advanced Hotplate Stirrer

**Includes:** Temperature probe (PT100, B Class)

**Optional:** Non-slip heating bath, transparent shield, supporting rod, clamp, clamp holder, PT100 A class

**Warranty:** Two years

**Certifications:** cCSAus (100-120V models), CE (230V models), RoHS Compliant

## RT2 Advanced Hotplate Stirrer Specifications

Temperature Range	Heating Control	Speed Range	Maximum Load (vessel)	Stirring Capacity (H2O)	Body Material	Top Plate Material	Volts/Hz	Power Consumption	Plug Configurations	Cat. No.
Heating Surface: 140 mm (5.5 in.) diameter Overall Dimensions: 161 x 290 x 100mm (6.34 x 11.42 x 3.94in.)										
Ambient 50°C to 350°C (122°F to 662°F)	Feedback Control with PID (Scale)	30-2000 rpm	25kg (55.1lbs)	20L	Aluminum	Ceramic coated aluminum	120V, 60Hz	600W	US Plug	88880006
Ambient 50°C to 350°C (122°F to 662°F)	Feedback Control with PID (Scale)	30-2000 rpm	25kg (55.1lbs)	20L	Aluminum	Ceramic coated aluminum	230V, 50/60Hz	600W	EU, UK, CHN/AUS Plug	88880005

## Accessories for RT2 Advanced Hotplate Stirrer

Description	Cat. No.
Heating Bath (Ø180mm, height 85mm) (stainless steel 304)	88880141
Transparent Shield (PC)	88880142
Support Rod (Ø12mm, 400mm, M10) (stainless steel 304)	88880143
Temperature Probe (PT 100, B Class, 250°C)	88880147
C-5, Clamp Holder (PP body, Ø12 mm)	88880148
3 Prong Clamp ( 60mm grip)	88880149
Temperature Probe (PT100, A Class, 400°C)	88880150



**Includes:** Temperature Probe (PT 100, B Class, 250°C)

# Cimarec i Magnetic Stirrers

Renowned for their outstanding quality and durability, Cimarec i Magnetic Stirrers are available in a range of sizes, with inductive drive systems to match the application or process need

## Features include:

- Powerful magnetic couplings ensure precise, reproducible, stirring performance for both general and specialty applications
- Available with either convenient built-in controllers or versatile external controllers
- Operates without moving parts to reduce maintenance and wear over time
- Single-point and multi-point stirring configurations
- Safe and low voltage operation
- Hermetically-sealed drives that help enable smooth operation in challenging environments, easier cleaning and contamination prevention
- Adjustable power settings, resulting in an environmentally friendly solution that decreases power consumption and heat output



Cimarec i Magnetic Stirrers

# Cimarec i Micro Stirrers

Experience precision with a low-profile digital display hotplate stirrer, equipped with PT100 sensor that provide precise temperature measurements for sensitive experimental procedures

## Features include:

- Hermetically sealed housing resists dust and microorganisms
- Suitable for use in high humidity conditions, CO<sub>2</sub>, refrigerators and can be fully submerged in water baths up to 95°C
- Stainless-steel housing has excellent chemical resistance
- Stir speeds up to 1400 rpm; stir volumes up to 1L

## Controller Options

- Cimarec i Standard Telemodul Controller – compact and space-saving design
- Cimarec i Telemodul 20C – equipped with micro-processor controls, adjustable power setting and easy programming
- Sync up to Cimarec i Micro Stirrers using one controller with optional distributors or without controller (50134760)

**Operating conditions:** -10 to 100°C at 95% rH, -10 to 120°C in dry air, 0-95°C submerged in water; 100-240 V units contain a cord set with various plugs

**Warranty:** Five years

**Certifications:** CE



**Cimarec i Micro Stirrer**

## Cimarec i Micro Stirrer Specifications

Model	Stirring Speed (rpm)	Power Setting	Protection Class (stirrer only)	Weight	Electrical	Cat. No.
<b>Overall Dimensions: 48 x 48 x 15cm (1.8 x 1.8 x 0.6in.)</b>						
Micro w/ Standard Telemodul	130 to 1000	3w	IP68	0.2kg	230V Euro	50088162
Micro w/ Standard Telemodul	130 to 1000	3w	IP68	0.2kg	115V USA	50088150
Micro w/ Standard Telemodul	130 to 1000	3w	IP68	2.3kg	230V UK	50088151
Micro w/ Standard Telemodul	130 to 1000	3w	IP68	2.3kg	100V Japan	50088149
Micro 20 w/Telemodul	130 to 1400	2/4/6/8w	IP68	0.2kg	100-240V	50088148
Micro w/o Controller	–	–	IP68	0.2kg	–	50134760

# Cimarec i Maxi Direct Stirrers

With powerful magnets and no moving parts, these inductive-drive stirrers are the perfect choice for general lab needs

## Features include:

- Compact, space-saving design with large, flat, easy-to-clean work surfaces
- Gradual start acceleration is gentle and ensures optimum magnetic coupling
- Adjustable power settings are separate from the speed control to help decrease power consumption and lower heat output
- Precise microprocessor control with bright digital display
- Easy-to-clean, chemical resistant, sealed stainless-steel housing
- Easily recall last used settings
- Stir volumes up to 5L
- Smooth and even stirring as low as 80 rpm



Cimarec i Maxi Direct Stirrer

**Operating Conditions:** -10° to +40°C at 95% RH.  
100-240V units contain a cord set with various plugs.

**Warranty:** Five years

**Certifications:** CE

## Cimarec i Maxi Direct Stirrer Specifications

Description	Stirring Speed (rpm)	Power Setting	Protection Class	Weight	Electrical	Cat. No.
Maxi Direct Standard Telemodul Dimensions: 215 x 180 x 35mm (8.5 x 7.1 x 1.4in.)						
Maxi Direct	80 to 2000	5/10/15/20w	IP62	2.5kg/5.5lb	100-240V	50094713

# Cimarec i Poly 15 & Multipoint Stirrers

Low maintenance and wear-free stirrers available in platforms with up to 15 positions

## Features include:

- Large, flat easy-to-clean work surfaces
- Precise microprocessor control with bright digital display
- Easily access last used settings
- Gradual start acceleration is gentle and ensures superior magnetic coupling

## Cimarec i Poly 15 Stirrer

- Rugged, powder-coated, stainless-steel housing
- Stir speeds up to 990rpm
- Suitable for 15 × 250mL beakers or 6 × 1L flasks

## Cimarec i Multipoint 6/15 Stirrers

- IP64 protection rated; easily cleaned with running water
- Chemical resistant, sealed stainless steel housing
- Adjustable power settings are separate from the speed control that decreases power consumption and lowers heat output
- Smooth and even stirring as low as 80rpm and up to 2000rpm
- Stir volumes up to 3L per multipoint



Cimarec i Multipoint 15 Stirrer

**Operating conditions:** -5 to +40°C at 95% rH; 100-240 V units contain a cord set with various plugs

**Warranty:** Five years

**Certifications:** CE

## Cimarec i Poly 15 & Multipoint Stirrers Specifications

Model	No. of Stirring Positions	Stirring Speed (rpm)	Power Setting	Protection Class	Overall L x W x H	Weight	Electrical	Cat. No.
<b>Cimarec i Poly Stirrers</b>								
Poly 15	15	130 to 990	10w	IP32	420 × 240 × 35mm (16.5 × 9.4 × 1.4in.)	6kg/13 lb.	100-240V	50094596
<b>Cimarec i Multipoint Stirrers</b>								
Multipoint 6	6	80 to 2000	5/10/15/20w	IP62	420 × 240 × 35mm (16.5 × 9.4 × 1.4in.)	7.5kg/16.5 lb.	100-240V	50093557
Multipoint 15	15	80 to 2000	5/10/15/20w	IP62	420 × 240 × 35mm (16.5 × 9.4 × 1.4in.)	7.5kg/16.5 lb.	100-240V	50093538

# Cimarec i Telesystem Multipoint Stirrers

Designed for use with aggressive media in high humidity environments and for integration with incubators and controlled climate chambers

## Features include:

- All models submersible for use in water baths up to 50°C, incubators (including CO<sub>2</sub>), and refrigerators
- Inductive drive helps reduce wear and maintenance while ensuring complete synchronized stirring at all positions
- 6-, 15- or 60-position stirrers
- IP68 protection rated; easily cleaned with running water
- Smooth and even stirring from 100rpm up to 2000rpm
- Stir volumes up to 2L per multipoint
- External controllers decrease power consumption and lower heat output
- Chemical resistant, sealed stainless-steel housing
- Easily access last used settings

## Controller Options

- Cimarec i Telemodul 20C Controllers - microprocessor controls, adjustable power settings and advanced programmability
- Cimarec i Telemodul 40C Controllers - higher speeds, more power settings and PC control



Cimarec i Telesystem Multipoint Stirrer

**Operating conditions:** -10° to +56°C at 100% RH in air; 0° to 50°C submerged in water. 100-240 V units contain a cord set with various plugs

**Warranty:** Five years

**Certifications:** CE

## Cimarec i Telesystem Multipoint Stirrers Specifications

Model	Stirring Speed (rpm)	Power Setting	Stir Volume per point	Protection Class	Weight	Electrical	Cat. No.
<b>Overall Dimensions: 420 × 240 × 35mm (16.5 × 9.4 × 1.4in.)</b>							
Telesystem 6 w/ Telemodul 20C	130 to 1400	5/10/15/20w	1-1500mL	IP68	7.5kg (16.5 lb.)	100-240V	50088077
Telesystem 6 w/ Telemodul 40C	100 to 2000	4-40w	1-2000mL	IP68	8kg (17.6 lb.)	100-240V	50088078
<b>Overall Dimensions: 420 × 240 × 35mm (16.5 × 9.4 × 1.4in.)</b>							
Telesystem 15 w/ Telemodul 20C	130 to 1400	5/10/15/20w	1-1000mL	IP68	7.5kg (16.5 lb.)	100-240V	50088034
Telesystem 15 w/ Telemodul 40C	100 to 2000	4-40w	1-1200mL	IP68	8kg (17.6 lb.)	100-240V	50088036
<b>Overall Dimensions: 420 × 240 × 35mm (16.5 × 9.4 × 1.4in.)</b>							
Telesystem 60 w/ Telemodul 20C	130 to 1400	5/10/15/20w	0.1-50mL	IP68	7.5kg (16.5 lb.)	100-240V	50088009
Telesystem 60 w/ Telemodul 40C	100 to 2000	4-40w	0.1-100mL	IP68	8kg (17.6 lb.)	100-240V	50088011



# Cimarec i Controllers

## Cimarec i Standard Teleomodul Controllers

Included with the Cimarec i Micro, Mini, Compact and Maxi Stirrer

### Features include:

- Order as replacement controller only
- Single point stirring power for small to medium volumes



Cimarec i Standard Teleomodul Controller

### Cimarec i Standard Teleomodul Controllers Specifications

Stirring Speed(rpm)	Speed Control Accuracy	Stirring Power Relative to Rated Power	Ambient Temp. Range	Overall L x W x H	Weight	Electrical	Cat. No.
130 to 1000	±3	100%	0° to 40°C @ 80% relative humidity	96 × 63 × 50mm (3.7 × 2.4 × 1.9in.)	0.4kg (0.8 lb.)	230V/12V DC 7W, EU	50119115
130 to 1000	±3	100%	0° to 40°C @ 80% relative humidity	96 × 63 × 50mm (3.7 × 2.4 × 1.9in.)	0.4kg (0.8 lb.)	230V/12V DC 7W UK	50119118
130 to 1000	±3	100%	0° to 40°C @ 80% relative humidity	96 × 63 × 50mm (3.7 × 2.4 × 1.9in.)	0.4kg (0.8 lb.)	115V/12V DC 7W	50119119

## Cimarec i Teleomodul 40C and 20C Controllers

Cimarec i Micro, Mini, Compact, Maxi and Telesystems Stirrers

### Features include:

- Order as replacement controller only
- Multiple high speed and power settings to decrease power consumption and heat output for more demanding stirring tasks
- Single-handed operation with straightforward turn and press adjustment wheel
- Three individual program, to store and access keys for rapid start-up
- Last used settings stored in memory
- Rocking/shake mode reverses stir bar direction for a gentle back and forth stirring motion
- RS-232 interface for data transfer and PC control (40C model only)



Cimarec i Teleomodul 40C and 20C Controller

### Cimarec i 40C and 20C Controllers Specifications

Stirring Speed(rpm)	Speed Control Accuracy	Stirring Power Relative to Rated Power	Rated Power	Ambient Temp. Range	Starting Times/ Pause Times	Overall L x W x H	Weight	Output Voltage	Cat. No.
100 to 2000	±1	10 to 100 (10 levels)	40w	0° to 40°C @ 80% relative humidity	5 sec. to 60 min.	165 × 155 × 95mm (6.4 × 6.1 × 3.7in.)	0.7kg (1.5 lb.)	36V DC	50090774
130 to 1400	±1	25/50/75/100 (4 levels)	20w	0° to 40°C @ 80% relative humidity	5 sec. to 60 min.	165 × 155 × 95mm (6.4 × 6.1 × 3.7in.)	0.6kg (1.3lb.)	20V DC	50090773

# Cimarec i Stirrer Accessories

## Cimarec i Bath Mount Specifications

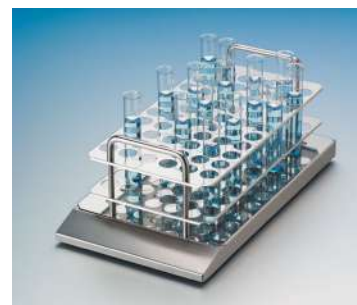
Material	Dimensions (L x W x H)	Capacity	Operating Temperature	For Use With	Cat. No.
Transparent Acrylic	610 × 330 × 185mm (24 × 13 × 7.3in.)	15L (3.9 gal.)	0° to 60°C	Telesytem Cimarec i Stirrers	50087880
Stainless Steel	520 × 315 × 160mm (20.4 × 12.4 × 6.3in.)	15L (3.9 gal.)	-10 to +200°C	Telesytem Cimarec i Stirrers	50087882



Cimarec i Bath Mounts

## Cimarec i Test Tube Rack Specifications

Material	For Use With	Cat. No.
Stainless Steel	25mm tubes in Telesytem Cimarec i Stirrers	50087960
Stainless Steel	16mm tubes in Telesytem Cimarec i Stirrers	50087955



Cimarec i Test Tube Rack



## Cimarec i Benchtop Distributors Specifications

Controller	Applied Model	Distributor Description	Minimum/Maximum	Cat. No.
Telemodul 20C	Micro stirrer	1 Outlet	Standard	N/A
		4-Place Distributor	2/4	50091720
		8-Place Distributor	Too weak	50091721
Telemodul 40C	Micro stirrer	1 Outlet	Not permitted	N/A
		4-Place Distributor	2/4	50091720
		8-Place Distributor	Too weak	50091721



Cimarec i Benchtop Distributors

## Cimarec Extension Cables Specifications

Model	Length	Compatibility	Cat. No.
4-Pin Extension Cable	3m (9.8ft.)	Cimarec i Telmodul 20C, 40C and Cimarec Telemodul 10M Controllers	50088016
6-Pin Extension Cable	3m (9.8ft.)	Cimarec Telemodul Biosystem 40B Controller	50088021
8-Pin Extension Cable	3m (9.8ft.)	Cimarec Telemodul 40M and 80M Controllers	50088102

Standard cord length is 2 meters

# Cimarec Power Direct High Capacity Stirrer

Ideal for hard to stir, viscous liquids up to 10L or 40L with quick stop

## Features include:

- Ideal for high-capacity (up to 40L) stirring
- Integrated controller has an adjustable power setting that decreases power consumption and lowers heat output
- Stir speeds from 100 to 2000rpm
- Sealed stainless-steel housing is easy to clean and chemical resistant



**Warranty:** Five years

**Certifications:** CE

Cimarec Power Direct High Capacity Stirrer

## Cimarec Power Direct Stirrer Specifications

Model	Stirring Speed	Stir Capacity	Power Setting	Protection Class	Overall L x W x H	Weight	Operating Temperature	Cat. No.
Power Direct	100 to 12000rpm	40L	5/10/15/20w	IP22	295 x 240 x 35mm (11.6 x 9.4 x 1.4in.)	2.5kg (5.5lbs)	-10° to +40°C	50098760

# Cimarec Mobil Direct, Mobil 200 and Mobil 600 Large Volume Stirrers

Outstanding stirring power for high-volume applications

## Features include:

- For use in pilot plant or integrated with process equipment
- Quick stop function halts the drive within three seconds
- Easy-to-clean, chemical resistant, sealed stainless-steel housing
- Maximum shaft torque is 30Ncm for the Mobil Direct Stirrer and 50Ncm for the Mobil 200 and 600 Stirrer
- Mobil Direct Stirrer can stir up to 150L and features an integrated controller with adjustable power settings
- Mobil 200 Stirrer can stir up to 200L; Mobil 600 Stirrer can stir up to 600L



Cimarec Mobil Direct Stirrers

## Operating conditions:

Mobil Direct Stirrer: -10 to +40°C at 95% rH

Mobil 200 & 600 Stirrer: -10 to +56°C at 100% rH

**Warranty:** Five years

**Certification:** CE

## Cimarec Mobil Direct Large Volume Stirrers

Description	Stir Speed	Power Settings	Type	Overall L x W x H	Weight	Electrical	Cat. No.
Mobil Direct	100 to 1000rpm	40w	IP65	330 x 330 x 80mm (13 x 13 x 3.4in.)	16kg	115V USA	50088131
Mobil Direct	100 to 1000rpm	40w	IP65	330 x 330 x 80mm (13 x 13 x 3.4in.)	16kg	230V Euro	50088128
Mobil Direct	100 to 1000rpm	40w	IP65	330 x 330 x 80mm (13 x 13 x 3.4in.)	16kg	100V Japan	50088129
Mobil Direct	100 to 1000rpm	40w	IP65	330 x 330 x 80mm (13 x 13 x 3.4in.)	16kg	230V UK	50100547
Mobil 200 w/o Controller	100 to 1000rpm	80w	IP65	180 x 180 x 80mm (7 x 7 x 3.4in.)	6kg	-	50119109
Mobil 600 w/o Controller	100 to 1000rpm	80w	IP65	330 x 330 x 80mm (13 x 13 x 3.4in.)	16kg	-	50119110

## Cimarec 40M and 80M Telemodul Controllers

### Features include:

- Constant speeds, even during viscosity changes
- High visibility digital display
- Thermal and electrical overload protection, with fault alert



Cimarec 40M and 80M Controller

### Cimarec 40M and 80M Telemodul Controller Specifications

Voltage	Stirring Range	Cat. No.
<b>Cimarec 40M Controllers (40w)</b>		
230V Germany	100 to 1000rpm	50118901
230V Denmark	100 to 1000rpm	50118903
230V UK	100 to 1000rpm	50118904
230V Switzerland	100 to 1000rpm	50118905
230V Australia	100 to 1000rpm	50118906
230V China	100 to 1000rpm	50118907
110V Japan	100 to 1000rpm	50119122
115V US	100 to 1000rpm	50119123

Voltage	Stirring Range	Cat. No.
<b>Cimarec 80M Controllers (80w)</b>		
230V Germany	100 to 1000rpm	50118908
230V Italy	100 to 1000rpm	50118909
230V UK	100 to 1000rpm	50118911
230V Switzerland	100 to 1000rpm	50118912
230V Australia	100 to 1000rpm	50118913
110V Japan	100 to 1000rpm	50119124
115V US	100 to 1000rpm	50119125

# Cimarec i Biosystem Slow Speed Stirrer for Cell Culture

Gentle stirring of microcarrier cultures, culture broths and cell suspensions inside CO<sub>2</sub> incubators

## Features include:

- Hermetically sealed housing resists microorganisms while separate external controller ensures only the hermetically sealed stirrer is exposed to the CO<sub>2</sub> environment
- Heatless operation will not compromise the incubator chamber conditions
- Stainless-steel housing is easy to clean and resists aggressive media
- Gradual low-shear acceleration on start-up
- Smooth and even stirring as low as 5rpm
- Adjustable controller power settings decrease power consumption and lower heat output
- Single position stirrers stir up to 20L; Four-position stirrers stir up to 5L per position



Cimarec i Biosystem Slow Speed Stirrer

**Operating conditions:** -10 to +56°C at 100% rH; 100-240V units contain a cord set with various plugs

**Warranty:** Five years

**Certification:** CE

## Cimarec i Biosystem Slow Speed Stirrer Specifications

Model	Stir Speed(rpm)	Protection Class	Dimensions (L x W x H)	Weight	Cat. No.
Biosystem w/o Controller	5 to 120	IP68	180 x 180 x 60mm (7 x 7 x 2.4in.)	3.4kg (7.5 lb.)	50119113
Biosystem 4-Position w/o Controller	5 to 120	IP68	330 x 330 x 60mm (12.9 x 12.9 x 2.4in.)	9.4kg (20.7 lb.)	50119114

## Required Cimarec Biosystem 40B Controllers

Model	Cat. No.
230V Germany	50118915
230V UK	50118918
230V China	50118921
230V Italy	50118916
230V Switzerland	50118919
115V US	50126086
230V Denmark	50118917
230V Australia	50118920



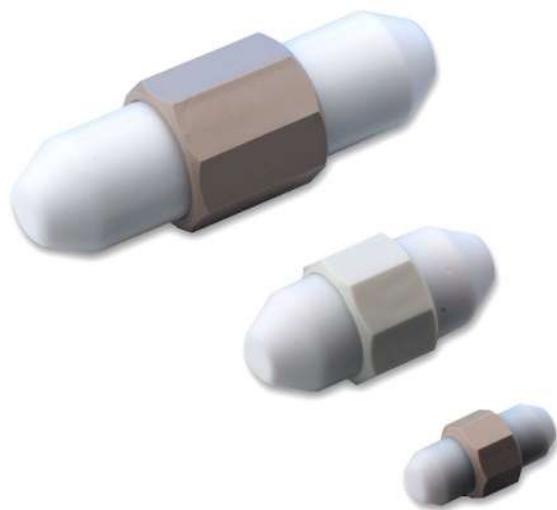
Cimarec 40B Telemodul Controller

# Komet Stir Bars

Generate over three times the torque of conventional stirring bars

## Features include:

- Significantly enhance stirrer performance and applications versatility
- High-energy Samarium-Cobalt (SmCo) magnetic core
- Excellent mixing action at high speeds and with viscous media
- Evenly coated PTFE surface prevents residue deposits
- Sterilize with steam to 249.8°F (121°C)



Komet Stir Bars

## Komet Stir Bar Specifications

Description	Shape	Outside Diameter x Length	Cat. No.
Cimarec Komet Stir Bar 90, 1 pack	Round	25mm x 90mm	50087902
Cimarec Komet Stir Bar 50, 1 pack	Round	21mm x 50mm	50087909
Cimarec Komet Stir Bar 30, 1 pack	Round	13mm x 30mm	50087930
Cimarec Komet Stir Bar 15, 1 pack	Round	9mm x 15mm	50087924
Cimarec Komet Stir Bar 90 with glide ring, 1 pack	Round, with glide ring	31mm x 90mm	50093336
Cimarec Komet Stir Bar 50 with glide ring, 1 pack	Round, with glide ring	26mm x 50mm	50093335
Cimarec Komet Stir Bar 30 with glide ring, 1 pack	Round, with glide ring	17mm x 30mm	50093334



# Cimarec i Controller Summary

## Cimarec i Controller Specifications

	Standard Telemodul	Telemodul 20C	Telemodul 40C	Plug Configuration	IP Class	Catalog Page No.
<b>Micro</b>	130-1000rpm 3w	130-1400rpm 2/3/4/8w control 2/4/6/8 Micro stirrers by 4 or 8-distributor	–	EU, UK, JP, US	IP68	14
<b>Telesystem</b>	–	130-1400rpm 5/10/15/20w	100-2000rpm 4-40w	EU, UK, JP, US	IP68	18
<b>Mobil 200</b>	–	100-1000rpm 40w Plug: EU, UK, Swiss, Denmark, CHN, AUS, JP, US	100-1000rpm 80w Plug: EU, UK, Italy, Swiss, CHN, AUS, JP, US	–	IP65	21
<b>Mobil 600</b>	–	100-1000rpm 40w Plug: EU, UK, Swiss, Denmark, CHN, AUS, JP, US	100-1000rpm 80w Plug: EU, UK, Italy, Swiss, CHN, AUS, JP, US	–	IP65	21
<b>Biosystem</b>	–	–	–	50-120rpm (1 point/4 points) 0.4-4w Plug: EU, UK, Swiss, Denmark, Italy, CHN, AUS, US	IP68	22
<b>Biosystem 4</b>	–	–	–	50-120rpm (1 point/4 points) 0.4-4w Plug: EU, UK, Swiss, Denmark, Italy, CHN, AUS, US	IP68	22

# Large External-Controlled Hotplates

Uniform heating of large volumes and multiple vessels operations

## Features include:

- External controller operates outside fume hoods
- Robust design for safety; large capacity with excellent temperature stability
- Porcelain-coated, stainless-steel top and case offer chemical and stain resistance
- Chemical-resistant cover protects line cord
- Isolation of controls allows operation in hazardous environments
- Percentage input controller delivers infinite temperature selection
- Power light indicates when control is operating



Large External-Controller Hotplates

**Warranty:** Three years

**Includes:** 5ft. (1.5m) 3-wire cord and plug

## Large External-Controlled Hotplates Specifications

Heating Surface Area	Temperature Range	Temperature Stability	Temperature Uniformity	Electrical Requirements	Cat. No.
30.5 x 30.5cm (12 x 12in.)	150° to 371°C (300° to 700°F)	±5°C (9°F)	±10°C (18°F) (at 150°C)	120V 50/60Hz, 1600w, 13.3A	RC2235Q
30.5 x 60.9cm (12 x 24in.)	150° to 371°C (300° to 700°F)	±5°C (9°F)	±10°C (18°F) (at 150°C)	240V 50/60Hz, 3200w, 13.3A (Special Plug USA)	RC2240Q

# 2200 Series Aluminum Top Hotplates

Ideal for large-volume heating applications requiring precise temperature

## Features include:

- Large, aluminum heating surface, thermostatic temperature controls for outstanding temperature uniformity and stability
- Cycle light indicates when power is being supplied to heating element
- Stainless-steel case provides safe, reliable construction and optimal strength for heavy loads
- Epoxy-painted surface increases chemical resistance in corrosive environments

**Warranty:** Three years

**Certifications:** UL listed

**Alert:** Recommended for use with glass vessels only



2200 Series Aluminum Top Hotplates

## 2200 Series Aluminum Top Hotplates Specifications

Heating Surface Area	Temperature Range	Temperature Stability (at 100°C)	Temperature Uniformity (at 100°C)	Overall L x W x H	Electrical	Cat. No.
30.5 x 30.5cm (12 x 12in.)	38° to 371°C (100° to 700°F)	±3.0°C (5.4°F)	±4.0°C (7.2°F)	33 x 30.5 x 15.6cm (13 x 12 x 6.13in.)	120V 50/60Hz, 1600w, 13.3A	HPA2235MQ
30.5 x 30.5cm (12 x 12in.)	38° to 371°C (100° to 700°F)	±3.0°C (5.4°F)	±4.0°C (7.2°F)	33 x 30.5 x 15.6cm (13 x 12 x 6.13in.)	240V 50/60Hz, 1600w, 6.7A (Special Plug USA)	HPA2230MQ
30.5 x 60.9cm (12 x 24in.)	38° to 371°C (100° to 700°F)	±3.5°C (6.3°F)	±10°C (18°F)	34.9 x 60.9 x 15.9cm (13.75 x 24 x 6.25in.)	120V 50/60Hz, 3200w, 26.6A	HPA2245MQ*
30.5 x 60.9cm (12 x 24in.)	38° to 371°C (100° to 700°F)	±3.5°C (6.3°F)	±10°C (18°F)	34.9 x 60.9 x 15.9cm (13.75 x 24 x 6.25in.)	240V 50/60Hz, 3200w, 13.3A	HPA2240MQ*

\*12x24 top plate models not supplied with cord and plug due to high-wattage consumption requirements. Must be hard wired.

# Explosion-Proof Series Hotplates

Deliver the highest protection for hazardous applications, including Class I, Group C and D flammable gases

**Features include:**

- Over-temperature safety monitors, precise thermostatic controls and sealed aluminum housing
- Corrosion-resistant steel case for easy cleaning and maintenance
- Thermostatic safety is set at 243°C (469.4°F) for added protection
- Maintains temperature within ±5.5°C (9.9°F)
- Sealed aluminum housing contains and protects controls
- Cast aluminum top plate maximizes heat transfer and uniformity (±6.5°C or 11.7°F)



**Explosion-Proof SAFE-T HP6 Hotplate**

**Includes:** Stirrer unit and one 2 × 0.38 in. (5 × 1cm) PTFE-coated stir bar

**Warranty:** Three years

**Compliance:** Meets IEC1010 laboratory standards

**Certifications:** UL listed. Safe for Class 1, Group C and D, flammable gases or solvent vapors

**Explosion-Proof Hotplates Specifications**

Model	Surface Dimensions	Surface Material	Temperature Range	Overall L x W x H	Weight	Electrical	Cat. No.
SAFE-T HP6 Hotplate	15.6 x 15.6cm (6.13 x 6.13in.)	Aluminum	38° to 220°C (100° to 428°F)	32.4 x 28.3 x 20cm (12.8 x 11.1 x 7.9in.)	13.6kg (30 lb.)	120V 50/60Hz; 600w; 5A	HP11515B
SAFE-T HP6 Hotplate	15.6 x 15.6cm (6.13 x 6.13in.)	Aluminum	38° to 220°C (100° to 428°F)	32.4 x 28.3 x 20cm (12.8 x 11.1 x 7.9in.)	13.6kg (30 lb.)	100V 50/60Hz	HP11514B

Find out more at [thermofisher.com/hotplates](http://thermofisher.com/hotplates)